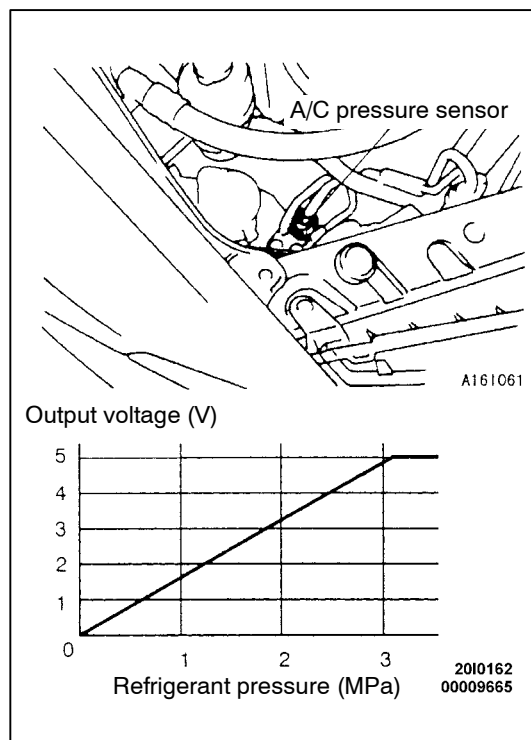


GROUP 55**HEATER, AIR CONDITIONER AND VENTILATION****GENERAL****OUTLINE OF CHANGE**

The following service procedures have been added to correspond to the addition of the GDI engine models.

**ON-VEHICLE SERVICE <GDI>****A/C PRESSURE SENSOR CHECK**

1. Install a vacuum gauge to the high-pressure service valve.
2. Start the engine, and turn on the A/C switch.
3. Confirm that the relationship between the A/C pressure sensor output voltage and the refrigerant pressure meets the graph.

NOTE

Permissible range should be $\pm 10\%$.

COMPRESSOR AND TENSION PULLEY <GDI>

REMOVAL AND INSTALLATION

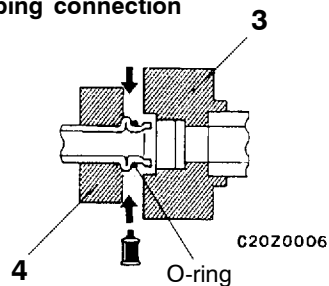
Pre-removal Operation

- Discharging of Refrigerant

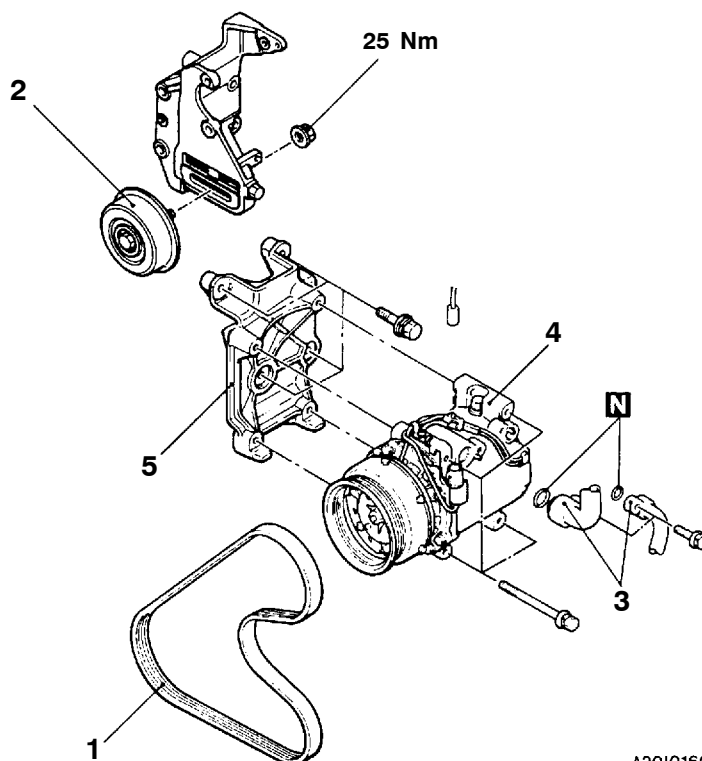
Post-installation Operation

- Drive Belt Tension Adjustment
- Changing of Refrigerant

Piping connection



Compressor oil: SUN PAG 56



A2010160
00009975

Removal steps

- Under cover
 - Condenser fan motor
1. Drive belt
 2. Tension pulley
 3. Hose connections

- ◀C▶ ▶A◀ 4. Compressor
5. Compressor bracket

NOTE

The service points are the same as before.

◀A▶

◀B▶